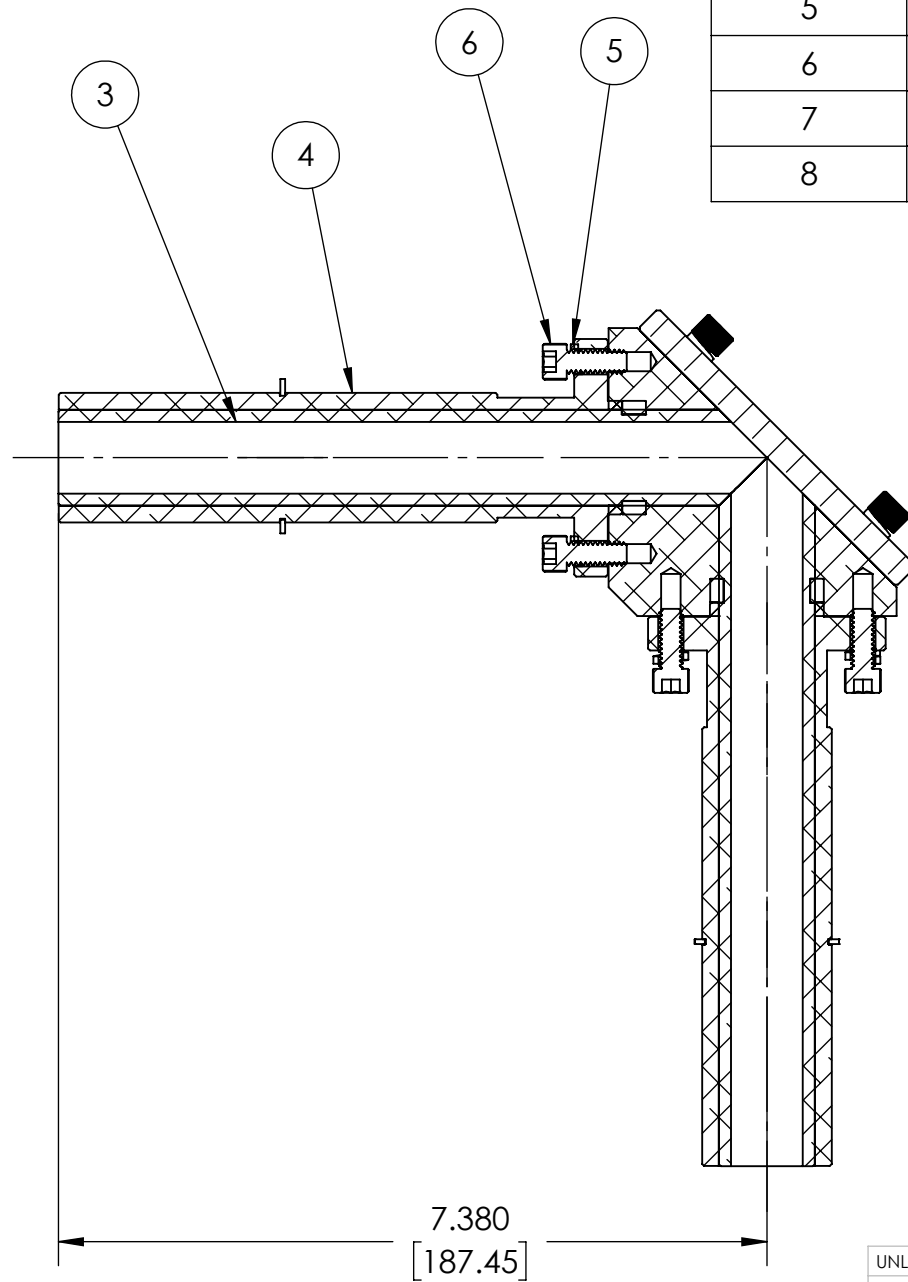
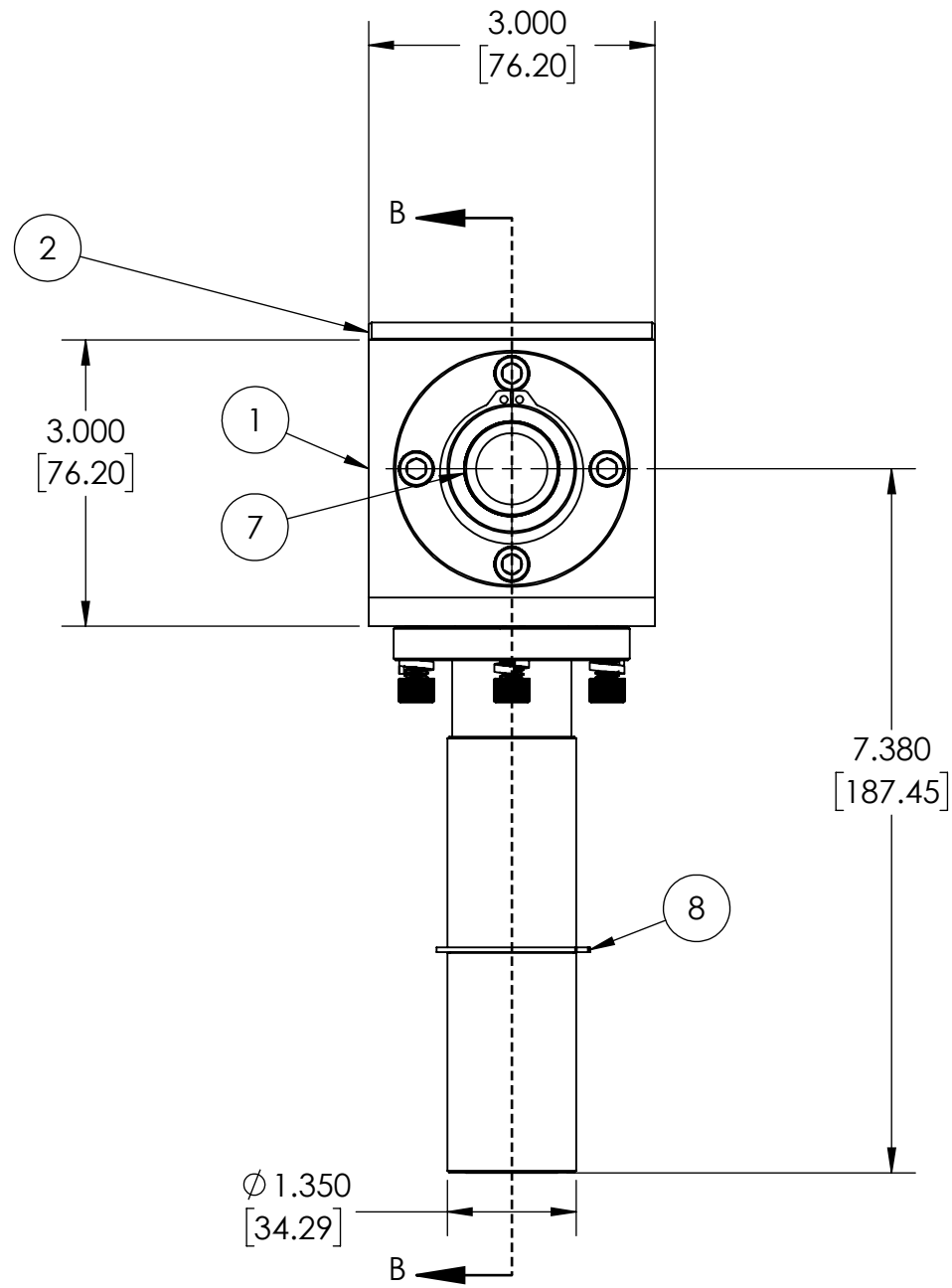



ITEM NO.	PART NUMBER	DESCRIPTION	QTY.
1	121000167-01-HC	UNIVERSAL MITERBEND BLOCK	1
2	121000174	60 MITERBEND MIRROR	1
3	121002909	263-13 MITERBEND CWG	2
4	121000984-HC	35 MM MITER BEND ARM	2
5	98437A110	WA #1/4 LOCK SST18-8	12
6	92196A539	SC 1/4-20 SKT HD 0.625 LG SST18-8	12
7	121000711	MITER COLLAR	2
8	98410A249	1-3/8" EXTERNAL RETAINING RING	2



DIM : IN
MM

UNLESS OTHERWISE SPECIFIED: DIMENSIONS ARE IN INCHES		TITLE: 263-13-3535-90-MB			
TOLERANCES: ANGULAR: MACH ± 1 BEND ± 3 ANGULAR ONE DECIMAL ± 0.1 TWO PLACE DECIMAL ± 0.02 THREE PLACE DECIMAL ± 0.005		PROPRIETARY AND CONFIDENTIAL THE INFORMATION CONTAINED IN THIS DRAWING IS THE SOLE PROPERTY OF BRIDGE12 TECHNOLOGIES, INC. ANY REPRODUCTION IN PART OR AS A WHOLE WITHOUT THE WRITTEN PERMISSION OF BRIDGE12 IS PROHIBITED.			
INTERPRET GEOM. TOLERANCING PER: ASME Y14.5 - 2018		NAME	DATE	SIZE DWG. NO.	REV
MATERIAL		MODEL	CRG	2020-09-23	B 122001428 A
FINISH		DRAWN	CRG	2023-09-13	
DO NOT SCALE DRAWING		CHECKED			
APPROVED		SCALE: 1:4		WEIGHT:	SHEET 1 OF 1